



Assessment framework childcare centre

(daycare and out-of-school care) BES



Below is the assessment framework for childcare centres (daycare and out-of-school care).
The appendix with the legal elaboration of this assessment framework can be found on our website
(see: [Caribbean Netherlands | Education Sectors | Inspectorate of Education \(onderwijsinspectie.nl\)](#)).

The abbreviations used are:

BES: Bonaire, St. Eustatius and Saba

Bko BES: Childcare Decree BES

EV: Island Ordinance

Wko BES: Childcare Act BES

Rko BES: Childcare Regulations BES

EB: Island Decree

I. Quality Area Administration, Staff and Accommodation (ASA)



Administration

- 1. Operating permit** (*Wko BES artikel 2.1, eerste, tweede en zesde lid, onderdeel a, EV Kinderopvang Bonaire 2026 artikel 7 en 8, EV kinderopvang Saba, artikel 4 en 5 en EV Sint Eustatius PM*)

The operator of the childcare centre has an operating permit. This is authorisation from the Executive Council to run a childcare centre. The cover page of the permit is displayed in the childcare centre. The operator reports changes to the Executive Council in the appropriate manner.



Staff and groups

- 2. Qualification, training and experience** (*Wko BES artikel 2.4, eerste lid, onderdelen b en d, artikel 2.4, tweede lid, onderdeel e, artikel 2.4, vierde lid, onderdeel b, artikel 2.4, vijfde lid, onderdeel b en Bko BES artikel 2.7, artikel 2.8., artikel 2.11., artikel 2.15. en artikel 5.1.a en artikel 5.2, Rko BES artikel 4, tweede lid, onder j, en k., artikel 5, artikel 6 en 7 en EV Kinderopvang Bonaire 2026, artikel 15, EV Sint Eustatius PM en EB Bonaire 2026 PM*)

The operator of the childcare centre ensures that the professionals meet the qualification, training and experience requirements. The operator provides the diplomas and additional documentary evidence for this. A professional must at least have had training at level 3 of Senior Secondary Vocational Education (MBO) as a pedagogical employee or with a pedagogical component. If there are several professionals present at the location, the operator must meet the requirements for team qualification at location level. Every day, there is an adult present at the location who can provide first aid to children.

- 3. Certificate of good conduct** (*Wko BES artikel 2.8, met uitzondering van onderdeel e*)

The operator of the childcare centre ensures that everyone who works or is regularly present at the childcare centre has a valid and up-to-date certificate of good conduct.

4. Working language (Wko BES artikel 2.4, vijfde lid, onderdeel a en artikel 2.7 en EV)

In the case of childcare in a childcare centre on Bonaire, the working language is Dutch or Papiamentu. On St. Eustatius and Saba, this is English or Dutch. In specific circumstances, another working language may also be spoken due to the origin of the children.

5. Number of professionals and group size (Wko BES artikel 2.1, zesde lid, onderdeel a, 2.4 lid, eerste lid onderdelen b en c, artikel 2.4, tweede lid, onderdelen a en f, artikel 2.4, vierde lid, onderdelen c en d, Bko BES artikel 2.12., vierde en negende lid, artikel 2.13., artikel 2.14., artikel 2.15. en artikelen 5.1.a en 5.2., EV Kinderopvang Bonaire 2026, artikel 7, derde lid, onder e, EV Sint Eustatius PM)

The number of professionals in relation to the number of children per age category must meet the requirements. The correct ratio can be found in the tables on the professional-child ratio. A professional in training or a trainee in a training at level 3 of Senior Secondary Vocational Education (MBO) can only be assigned to the group if this employee already has a diploma at level 2 of Senior Secondary Vocational Education (MBO) or at level 2 of the Caribbean Vocational Qualification (CVQ). The operator of the childcare centre ensures that professionals in training and trainees only perform tasks that are appropriate to what they are already capable of and permitted to do based on their training. When deploying fewer professionals (a different staffing level), the operator complies with the conditions. The operator keeps attendance lists to record how many professionals are caring for the number of children.

6. Familiar spaces and people (stability) (Wko BES artikel 2.4 eerste lid, onderdeel b, artikel 2.4, tweede lid, onderdelen b en d, artikel 2.4 vierde lid, onderdelen d en e en Bko BES artikel 2.12., eerste tot en met negende lid en artikel 2.16.)

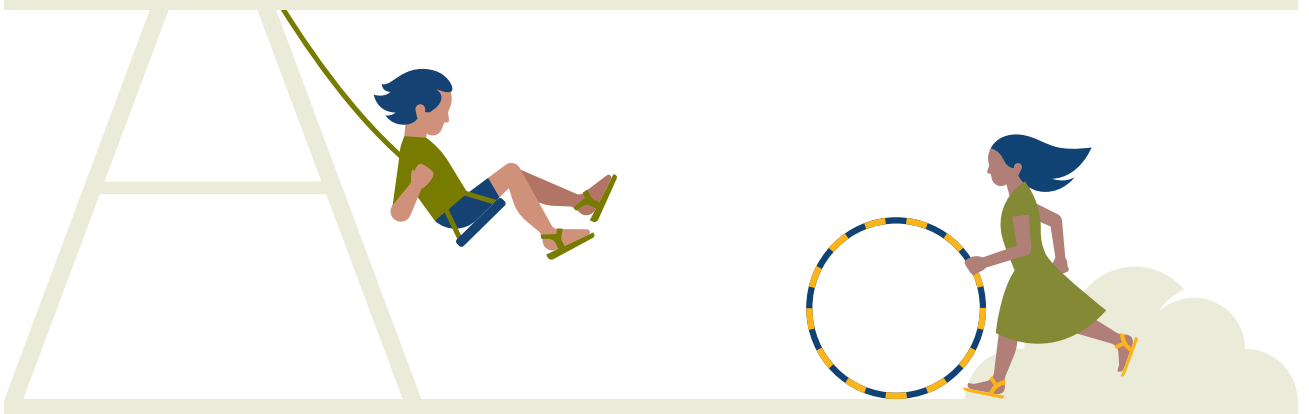
The operator of the childcare centre provides a stable environment for the children within the centre. The operator does this by working with master groups (daycare) or basic groups (out-of-school care), permanent professionals and a mentor. Parents are informed of this.



Accommodation

7. Accommodation and areas (Wko BES artikel 2.4, eerste lid onderdeel b, artikel 2.4 vierde lid onderdelen h en i en Bko BES artikel 2.26. en artikel 2.27., artikel 5.1. onder b en artikel 5.2. en EV Kinderopvang Bonaire 2026, artikel 11, eerste en tweede lid en EV Sint Eustatius PM)

The building in which the childcare centre is located has sufficient space (square metres) both inside and outside. An operator can include the porch as indoor play space if it meets the conditions. The childcare centre is safe, accessible and appropriately furnished and is suitable for the number of children and their ages. There is adequate ventilation inside. There is a separate sleeping area for babies. The outdoor play area has plenty of shade and is adjacent to the childcare centre.





II. Quality Area Safety, Health and Pedagogical Climate (SHP)



Health and safety

8. Health and safety policy (Wko BES artikel 2.3, eerste lid, onderdeel a, artikel 2.3, tweede en derde lid, artikel 2.4, eerste lid, onderdeel d, artikel 2.4, vierde lid onderdeel a en Bko BES artikel 2.4. en artikel 2.5)

The operator of the childcare centre ensures a safe and healthy environment for children. The operator draws up a health and safety policy that meets the criteria and acts in accordance with it. The operator evaluates the health and safety policy and adjusts it where necessary. The operator of a daycare ensures that an employee can always be seen and heard by another adult. We call this the four-eyes principle. The operator ensures that someone is on hand to help if there is only one professional present at the childcare centre. We call this a backup.

9. Healthy food (Wko BES artikel 2.3, eerste lid, onderdeel a en artikel 2.3, tweede en derde lid, artikel 2.4, eerste lid onderdeel d, artikel 2.4, vierde lid onderdeel a en artikel 2.4, vijfde lid onderdeel c, EV Kinderopvang Bonaire 2026, artikel 10, EV kinderopvang Saba, artikel 8, EV Sint Eustatius PM, EB Bonaire PM, EB Saba PM en EB Sint Eustatius PM)

The operator of the childcare centre provides healthy food and complies with the guidelines of the Public Entity.

10. Obligation to inform, consult and report (Wko BES artikel 2.11 en artikel 2.12)

This Section is expected to enter into force on 1 January 2027 and is subject to review from that date.

The operator of the childcare centre complies with the statutory rules on reporting, consulting and filing reports of criminal offences. This concerns sexual offences and/or abuse. The operator immediately contacts the expert if the operator becomes aware of a possible criminal offence (sexual offence and/or abuse) against a child by someone working at the childcare centre. Staff must report to the operator if they are aware of a possible criminal offence (sexual offence and/or abuse). The operator ensures that all employees are aware of their obligation to report, consult and file a report and know what to do.



Pedagogical and educational policy and pedagogical practice

11. Pedagogical and educational policy (Wko BES artikel 2.3, tweede lid, artikel 2.4, eerste lid, onderdeel d, artikel 2.4, vierde lid, onderdeel f, en Bko BES artikel 2.23. en artikel 2.24. en EV Kinderopvang Bonaire 2026 artikel 16, tweede lid)

The operator of the childcare centre has a pedagogical and educational policy plan that contains the required components. The operator ensures that employees act in accordance with this plan. The operator regularly evaluates the plan and adjusts it where necessary.

12. Emotional safety (Wko BES artikel 2.3, eerste lid, onderdeel a en derde lid, artikel 2.4 vierde lid, onderdeel f en Bko BES artikel 2.2., onderdeel a)

The operator of the childcare centre ensures a pedagogical climate that contributes to the emotional safety of children. The professionals interact with the children in a sensitive and responsive manner. They set clear boundaries and provide a fixed structure.

13. Personal skills (Wko BES artikel 2.3, eerste lid, onderdelen a en b en derde lid, artikel 2.4, vierde lid, onderdeel f en Bko BES artikel 2.2., onderdelen a, b en c)

The operator of the childcare centre provides a pedagogical climate that contributes to the development of the personal skills of children. The professionals support and guide the children in their development. They encourage the autonomy and the independence of the children. In this way, children learn to function more and more independently in a changing environment.

14. Social skills (Wko BES artikel 2.3, eerste lid, onderdeel a en derde lid, artikel 2.4, vierde lid, onderdeel f en Bko BES artikel 2.2., onderdelen b en c)

The operator of the childcare centre ensures a pedagogical climate that contributes to the development of the social skills of children. The professionals teach the children knowledge and social skills in a playful manner. In this way, children learn to build and maintain relationships with others in an increasingly independent manner. The professionals guide children in their interactions.

15. Transfer of norms and values (Wko BES artikel 2.3, eerste lid, onderdeel a en derde lid, artikel 2.4, vierde lid, onderdeel f en Bko BES artikel 2.2., onderdeel d)

The operator of the childcare centre ensures a pedagogical climate in which children learn to deal with the values and norms that are important in society. The professionals encourage children to become acquainted with these values and norms in society in an open manner. In this way, the children learn to treat others with respect and to be an active part of society.





III. Quality Area Childcare and Learning by Playing (CLP)



Program/provision

16. Daily routine and activity programme (Wko BES artikel 2.4 eerste lid, artikel 2.4, tweede lid, onderdelen c en h, artikel 2.4, vierde lid, onderdelen g en k en Bko BES artikel 2.19)

The operator of the childcare centre provides a daily routine and a varied activity programme for the children. The programme consists of activities that focus on the relaxation of the children and activities that stimulate their development. The programme is appropriate for the ages and developmental levels of the children.

17. A. Early childhood education programme (daycare) (Wko BES artikel 2.3, artikel 2.4 eerste lid, tweede lid onderdeel h, derde lid en vierde lid onderdeel g en Bko BES artikel 2.25)

The operator of the daycare uses an early childhood education programme. This programme provides a structured, coherent and playful approach to developing at least the language skills, arithmetic skills, motor skills, creative skills and social-emotional skills of the children. The programme is appropriate for the Caribbean context and the developmental stage of the children. It contributes to a smooth transition between childcare and primary education.

B. Provision focused on child's development (out-of-school care) (Wko BES artikel 2.3 en 2.4 eerste lid en tweede lid onderdeel h. en Bko BES artikel 2.2)

The operator of the out-of-school care provides an offer that stimulates the language skills, arithmetic skills, motor skills, creative skills and social-emotional skills in a playful and purposeful manner.

18. Classroom design (Wko BES artikel 2.4, eerste lid onderdeel b, artikel 2.4, vierde lid onderdelen h en i, Bko BES artikel 2.2. onderdeel e en artikel 2.26, eerste lid)

The operator of the childcare centre designs the play-learning environment to be attractive, challenging and rich in language. The layout of the space is appropriate for the number and age of the children.



Monitoring the development

19. Monitoring development (Wko BES artikel 2.4, eerste lid, artikel 2.4, tweede lid onderdeel g, artikel 2.4, vierde lid onderdeel l en Bko BES, artikel 2.16., derde lid)

The operator of the childcare centre monitors the development of the children. The mentor regularly discusses the results of this with the parents and is the point of contact for any questions parents may have about the development and the well-being of the child.

20. Identifying development issues and reflecting (Wko BES, artikel 2.4, eerste en tweede lid, onderdeel g, artikel 2.4, vierde lid, onderdeel l en Bko BES artikel 2.21. en artikel 2.22)

The operator of the childcare centre observes particularities in the development of children. The operator prepares a counselling plan for these children. The operator and the professionals involved then consult with the provider of pedagogical support and advice, if the parents agree. They record the outcome of this in the file of the child. The operator regularly reflects on the development of the child with the professionals involved.



21. Inform the primary school about the child's development (daycare) (*Wko BES artikel 2.15 en Bko BES artikel 2.24., eerste lid, onderdeel k en artikel 4.1*)

With the consent of the parents, the operator of the daycare ensures a smooth transfer of information about the development process of a child to the primary school. This is intended to help with the smooth transition of the child. This includes information about language skills, arithmetic skills, motor skills and social-emotional skills. A meeting is then held between the professional of the childcare centre and the teacher of the primary school. Parents are given the opportunity to attend the meeting with the primary school. The operator retains this information for a maximum of two years after the child has started primary school.



Learning by playing

22. Encouraging the development through play and goal-oriented (*Wko BES artikel 2.3, eerste lid, onderdeel d, artikel 2.3, derde lid en Bko BES artikel 2.2., onderdeel b*)

The professionals challenge children in a playful and purposeful manner in their development (language skills, arithmetic skills, motor skills, creative skills and social-emotional skills).

23. Interaction (*Wko BES artikel 2.3, eerste lid, onderdeel d, artikel 2.3, derde lid en Bko BES artikel 2.2. onderdelen c en e*)

The professionals encourage and guide the interactions with and between children. The interactions are positive and contribute to (language) development. The professionals provide a language-rich play-learning environment.

24. Active participation (*Wko BES artikel 2.3, eerste lid, onderdeel d, artikel 2.3, derde lid en Bko BES artikel 2.2. onderdelen a, b en c*)

The professionals and children are active and engaged. This means that the pedagogical employees challenge the children by letting them do and experience things for themselves. They provide positive guidance and targeted explanations in small steps.



Cooperation

25. Cooperating with parents (*Wko BES artikel 2.4, eerste lid, artikel 2.4, tweede lid, onderdeel h en vierde lid, Bko BES artikel 2.24., eerste lid, onderdeel j en EV Sint Eustatius PM*)

The operator and the professionals at the childcare centre work together with parents to stimulate the development of the child. The operator implements the provisions of the pedagogical-educational policy plan regarding cooperation with parents.

26. Cooperating with local partners (*Wko BES artikel 2.4, vijfde lid, onderdeel d, artikel 2.16 en EV Sint Eustatius PM*)

The operator of the childcare centre works together with local partners to achieve a continuous development pathway. The operator of the childcare centre participates in island-wide consultations on maximising the participation of children and the continuous development and learning pathway from childcare to primary education.

IV. Quality Area Quality Assurance, Quality Culture and Accountability (QQA)



Quality assurance

27. Working systematically on quality improvement (Wko BES artikel 2.3, eerste, tweede en derde lid, artikel 2.4, eerste lid en artikel 2.4, vierde lid onderdeel j en Bko BES artikel 2.2. en artikel 2.24., eerste lid, onderdeel h)

The operator of the childcare centre sets quality objectives for the pedagogical, educational, safety, health and organisational policy. The operator prepares a plan of approach and a planning schedule for these objectives and works on their implementation.

28. Evaluating the quality (Wko BES artikel 2.3, eerste, tweede en derde lid, artikel 2.4, eerste lid en artikel 2.4, vierde lid onderdeel j en Bko BES artikel 2.2. en artikel 2.24., eerste lid, onderdeel h)

The operator of the childcare centre regularly evaluates whether the quality objectives of the policy in the area of pedagogy, education, safety, health and organisation have been achieved.



Quality culture

29. Professional quality culture (Wko BES artikel 2.4, eerste lid en artikel 2.4, vierde lid, onderdeel j en Bko BES artikel 2.4., tweede lid, artikel 2.5., artikel 2.24., eerste lid, onderdelen h en i)

The operator of the childcare centre ensures a professional learning and improvement culture. Within this culture, the management of the childcare centre and the staff work on their own skills and collaborate on continuously improving the quality of the childcare centre. The operator ensures a clear division of tasks, roles and responsibilities within the childcare centre.



Accountability and dialogue

30. Providing information (Wko BES artikel 2.14, Bko BES artikel 2.5., eerste lid onderdeel e en Bko BES artikel 2.23., derde lid)

The operator of the childcare centre informs the parents about the pedagogical and educational policy. The operator ensures that the current health and safety policy and the evaluations thereof are clear to the staff and parents. The operator informs the parents and the staff about the inspection reports.

31. Complaints procedure (Wko BES artikel 2.9 en EV Kinderopvang Bonaire 2026, artikel 16, EV kinderopvang Saba, artikel 11, tweede lid en vierde tot en met negende lid en EV Sint Eustatius PM)

The operator of the childcare centre establishes a complaints procedure for parents. This concerns the handling of complaints about behaviour towards a parent or child, and about the agreement between the operator and the parents. The complaints procedure meets the requirements imposed. The operator conducts the investigation into a complaint carefully in accordance with the requirements.



32. Parent committee (Wko BES artikel 2.10 en EV Kinderopvang Bonaire 2026, artikel 12, 13 en 14, EV kinderopvang Saba, artikel 12, 13 en 14 en EV Sint Eustatius PM)

The operator of the childcare centre establishes a parent committee if the childcare centre cares for more than 50 children. The operator establishes regulations that meet the requirements imposed. The parent committee is given the opportunity to issue an opinion on the subjects covered in the Island Ordinance. If the operator does not adopt the opinion of the parent committee, the operator must substantiate this in writing. The operator and the parents' committee shall consult at least once a year. The operator provides the parent committee with all necessary information in a timely manner and upon request.





Assessment framework host parent care BES



Below is the assessment framework for host parent care. The appendix with the legal elaboration of this assessment framework can be found on our website (see: [Caribbean Netherlands | Education Sectors | Inspectorate of Education \(onderwijsinspectie.nl\)](https://onderwijsinspectie.nl)).

The abbreviations used are:

BES: Bonaire, St. Eustatius and Saba

Wko BES: Childcare Act BES

Bko BES: Childcare Decree BES

Rko BES: Childcare Regulations BES

EV: Island Ordinance

EB: Island Decree

I. Quality Area Administration, Host Parent and Accommodation (AHPA)



Administration

GOO 1. Operating permit (*Wko BES artikel 2.1, eerste lid onderdeel a, tweede en zesde lid, onderdeel a en artikel 2.5 onderdelen a en b en EV Kinderopvang Bonaire 2026, artikel 7 en 8 en EV kinderopvang Saba, artikel 4 en 5*)

The host parent has an operating permit. This is authorisation from the Executive Council to run a host parent facility. The cover page of the permit is displayed in the host parent facility. The host parent reports changes to the Executive Council in the appropriate manner. The host parent complies with the requirements and restrictions imposed on the operating permit.



Requirements host parent and group size

GOO 2. Qualification, training and experience (*Wko BES artikel 2.6, eerste, tweede en vijfde lid, en Bko BES artikel 2.7., artikel 2.10. en artikel 2.11. Rko BES artikel 4, derde lid, onderdeel d., artikel 5., artikel 7., eerste lid en EV kinderopvang Saba, artikel 10 onderdeel a en b*)

The host parent meets the requirements for qualification, training and experience. The host parent provides the relevant diplomas and additional documentary evidence for this. The host parent has training at least at level 2 of Senior Secondary Vocational Education (MBO) as a pedagogical employee or with a pedagogical component. Every day, there is an adult present at the location who can provide first aid to children.

GOO 3. Certificate of good conduct (*Wko BES artikel 2.8 eerste lid, onderdelen a, e en f, tweede tot en met vijfde lid*)

The host parent ensures that everyone who works or is structurally present at the host parent facility has a valid and up-to-date certificate of good conduct.



GOO 4. Working language (Wko BES artikel 2.6, vijfde lid, onderdeel d en artikel 2.7)

In the case of host parent care on Bonaire, the working language is Dutch or Papiamentu. On St. Eustatius and Saba, this is English or Dutch. In specific circumstances, another working language may also be spoken due to the origin of the children.

GOO 5. Group size (Wko BES artikel 2.1, zesde lid, onderdeel a, 2.6, vierde lid, onderdeel e, Bko BES artikel 2.17, EV Kinderopvang Bonaire 2026, artikel 7, derde lid, onder e)

The number of children per age group meets the requirements (host parent-child ratio).



Accommodation

GOO 6. Accommodation and areas (Wko BES artikel 2.6, vierde lid, onderdeel a en vijfde lid, onderdeel a en EV Kinderopvang Bonaire 2026, artikel 11, EV kinderopvang Saba, artikel 9, EB Bonaire PM en EB Saba PM)

At the host parent facility there is enough space to play and sleep. The host parent facility is safe, accessible and appropriately furnished. The layout is suitable for the number of children and their ages. There is adequate ventilation inside. There is a separate sleeping area for babies.



II. Quality Area Safety, Health and Pedagogical Climate (SHP)



Health and safety

GOO 7. Health and safety policy (Wko BES artikel 2.3, eerste lid, onderdeel a en tweede lid, artikel 2.6, eerste en vierde lid, onderdeel a, en Bko BES artikel 2.4., artikel 2.6. en artikel 2.18)

The host parent ensures a safe and healthy environment for children. Hence, the host parent draws up a health and safety policy that meets the criteria and acts in accordance with it. The host parent evaluates the health and safety policy and adjusts it where necessary. The host parent ensures that someone is on hand, if so required. We call this a backup.

GOO 8. Healthy food (Wko BES artikel 2.3, eerste lid, onderdeel a, artikel 2.6, eerste en vijfde lid, onderdeel c en EV Kinderopvang Bonaire 2026, artikel 10, EV kinderopvang Saba artikel 8, EB Kinderopvang Bonaire 2026 PM en EB Saba PM)

The host parent provides healthy food and complies with the guidelines of the Public Entity.

GOO 9. Obligation to consult (Wko BES artikel 2.13)
This Section is expected to come into force on 1 January 2027 and is subject to review from that date.

The host parent consults with the expert in the event of possible sexual offences or abuse.



Pedagogical and educational policy and pedagogical practice

GOO 10. Pedagogical and educational policy (Wko BES artikel 2.3, eerste en derde lid, artikel 2.6, eerste lid en vijfde lid, onderdeel f, Bko BES artikel 2.2)

The host parent has a written pedagogical and educational policy. The policy contains the required elements and the host parent follows what is written in it. The host parent regularly evaluates the policy and adjusts it if necessary.

GOO 11. Emotional safety (Wko BES artikel 2.3, eerste lid, onderdeel a en derde lid, artikel 2.6, eerste lid, onderdeel c en Bko BES artikel 2.2, onderdeel a)

The host parent provides a pedagogical climate that contributes to the emotional safety of children. The host parent interacts with children in a sensitive and responsive manner. The host parent sets clear boundaries and provides a fixed structure.

GOO 12. Personal skills (Wko BES artikel 2.3, eerste lid, onderdeel b, derde lid, artikel 2.6, eerste lid, onderdeel c en Bko BES artikel 2.2, onderdelen a, b en c)

The host parent provides a pedagogical climate that contributes to the development of the personal skills of children. The host parent supports and guides the children in their development. The host parent encourages the autonomy and the independence of the children. In this way, the children learn to function more and more independently in a changing environment.

GOO 13. Social skills (*Wko BES artikel 2.3, eerste lid, onderdeel b en derde lid, artikel 2.6, eerste lid, onderdeel c en Bko BES artikel 2.2. onderdeel c*)

The host parent provides a pedagogical climate that contributes to the development of the social skills of children. The host parent teaches the children knowledge and social skills in a playful manner. In this way, children learn to build and maintain relationships with others in an increasingly independent manner. The host parent guides children in their interactions.

GOO 14. Transfer of norms and values (*Wko BES artikel 2.3, eerste lid, onderdeel c en derde lid, artikel 2.6, eerste lid, onderdeel c en Bko BES artikel 2.2. onderdelen a en d*)

The host parent provides a pedagogical climate in which children learn to deal with values and norms that are important in society. The host parent encourages children to become acquainted with these values and norms in society in an open manner. In this way, children learn to treat others with respect and to be an active part of society.



III. Quality Area Childcare and Learning by Playing (CLP)



Offer

GOO 15. Daily routine and activity programme (Wko BES artikel 2.6, eerste en tweede lid, vierde, onderdeel d en vijfde lid, onderdeel g en Bko BES artikel 2.19. en EV)

The host parent establishes a daily routine and has a varied activity programme for the children. The programme consists of activities that focus on relaxation and activities that stimulate the development of children. The activity programme is appropriate for the ages and the developmental stage of the children.

GOO 16. Classroom design (Wko BES artikel 2.3, eerste lid, onderdeel d, artikel 2.6, eerste lid, onderdeel b en vijfde lid, onderdeel a en Bko BES artikel 2.2., onderdeel e, en EV Kinderopvang Bonaire 2026, artikel 11, eerste lid)

The host parent decorates the play-learning environment in an attractive, challenging and language-rich manner. The layout of the room is appropriate for the number and age of the children.



Monitoring development

GOO 17. Monitoring development (Wko BES artikel 2.6 eerste lid, tweede lid, onderdeel c, vierde lid, onderdeel c)

The host parent monitors the development of the children.

GOO 18. Signalling particularities (Wko BES artikel 2.6 eerste lid, tweede lid, onderdeel c, vierde lid, onderdeel c, Bko BES artikel 2.21)

The host parent observes particularities in the development of children. The host parent then consults with the provider of pedagogical support and advice, if the parents consent to this. The host parent records the outcome of this consultation in the file of the child.

GOO 19. Transfer child information to the primary school (Wko BES artikel 2.15 en Bko BES artikel 4.1)

With the consent of the parents, the host parent ensures a smooth transfer of information about the development process of a child (0-4 years) to the primary school. This is intended to help with a smooth transition for the child. The information concerns language skills, arithmetic skills, motor skills and social-emotional skills. A meeting is then held between the host parent and the teacher of the primary school. The parents are given the opportunity to attend the meeting with the primary school. The host parent retains this information for a maximum of two years after the child has started primary school.





Learning by playing

GOO 20. Encouraging the development through play and goal-oriented (Wko BES artikel 2.3, eerste en derde lid, artikel 2.6 en Bko BES artikel 2.2)

The host parent challenges children in a playful and purposeful manner in their development (language skills, arithmetic skills, motor skills, creative skills and social-emotional skills).

GOO 21. Interaction (Wko BES artikel 2.3, eerste lid, onderdeel d en derde lid en Bko BES artikel 2.2., onderdelen c en e)

The host parent encourages and guides interactions with and between children. These interactions are positive and contribute to (language) development. The host parent provides a language-rich play-learning environment.

GOO 22. Active participation (Wko BES artikel 2.3, eerste lid, onderdeel d en derde lid en Bko BES artikel 2.2. onderdelen c en e)

The host parent and the children are active and engaged. This means that the host parent challenges the children by letting them do and experience things for themselves. The host parent provides positive guidance and goal-oriented explanations in small steps.



Cooperation

GOO 23. Cooperating with local partners (Wko BES artikel 2.6, vijfde lid, onderdeel b, artikel 2.16 en EV Kinderopvang Bonaire 2026, artikel 17 en EB Bonaire PM)

The host parent works with local partners to achieve a continuous development pathway. The host parent participates in island-wide consultations on maximising the participation of children and the continuous development and learning pathway from childcare to primary education.

IV. Quality Area Quality Assurance, Quality Culture and Accountability (QQA)



Quality assurance

GOO 24. Working systematically on quality improvement (*Wko BES artikel 2.3 eerste lid en tweede lid, artikel 2.6 eerste lid en vijfde lid, onderdeel f en Bko BES artikel 2.2. en EV*)

The host parent works on the implementation and improvement of the policy focused on pedagogy, health, safety, and education.



Professional quality culture

GOO 25. Professional quality culture (*Wko BES artikel 2.6 eerste lid, tweede lid onderdeel b, derde lid en vijfde lid, onderdeel e en EV*)

The host parent works on the improvement of the quality of the host parent care, on their own competence, and makes use of the guidance and support of the Public Entity.



Accountability

GOO 26. Providing information (*Wko BES artikel 2.14 eerste lid, tweede lid, onderdeel a, derde lid, onderdeel a en vierde lid en Bko BES*)

The host parent informs the parents about the policy to be pursued. The host parent informs the parents about the inspection reports.

